





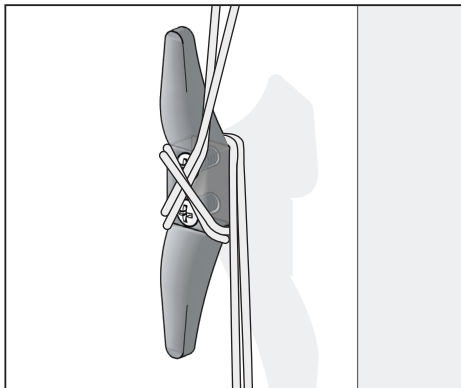
CHILD SAFETY DEVICE INSTALLATION

What You'll Need:

-  Cord cleat
-  Two screws
-  Drill
-  Pencil

Important info

Cord cleats are a fast and easy solution for keeping kids and animals from the risk of strangulation. Our blinds come with a compliant child-safety device (safety cleat), which must be installed.

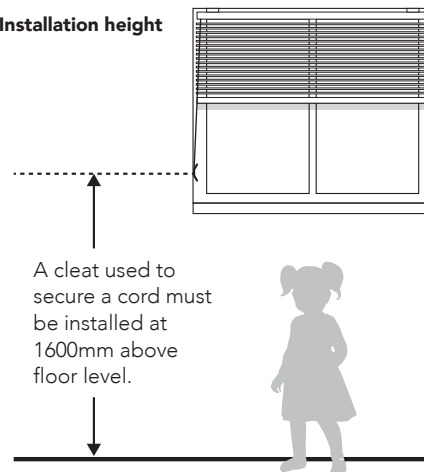


Important: Fix the cleat to the wall. Keep the cord taut at all times by wrapping it around the cleat in a figure-of-eight pattern.

Safety cleat must be installed at a minimum height of 1600mm above floor level.

- 1 Place the safety cleat in the desired position and mark the holes with a pencil.
- 2 Drill the screws provided to attach the safety cleat to the wall.
- 3 Once the cleat is installed, wrap the cords around the cleat in a figure-of-8 pattern. The cord must be fully accumulated around the safety cleat when the blind is not in use.

Installation height



A cleat used to secure a cord must be installed at 1600mm above floor level.

Aluminium Venetian Blinds

INSTALLATION GUIDE

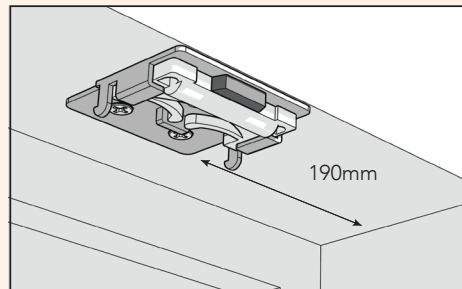
25
mm



SUPPLIED BRACKETS

Internal Mount Blind

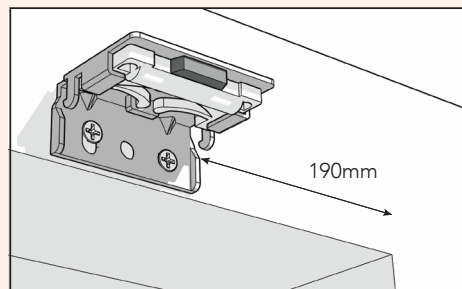
Aspect blinds come with brackets and screws.



Follow steps 2 and 3 for internal blinds to complete installation.

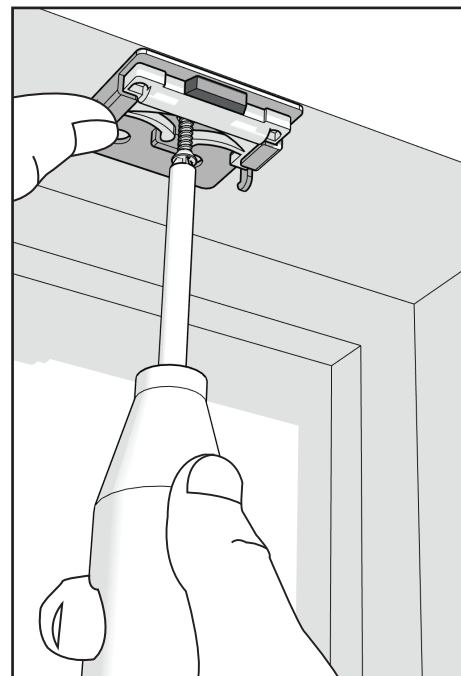
Outside Mounted Blind

Place one screw through the back of each bracket to the face of the window frame, making sure the blind will have a clear path when dropped.



Once unwrapped, handle the venetian blind from underneath the bottom rail.

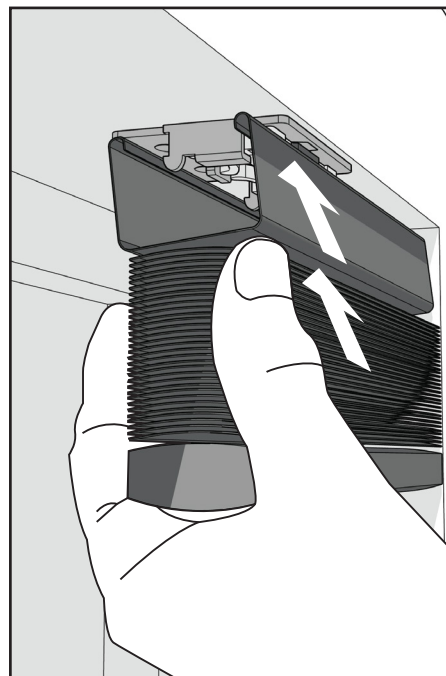
- 1 Now place one screw through the top of each bracket to the underside of the window frame, making sure the blind will have a clear path when dropped.



Important for internal and outside mount:

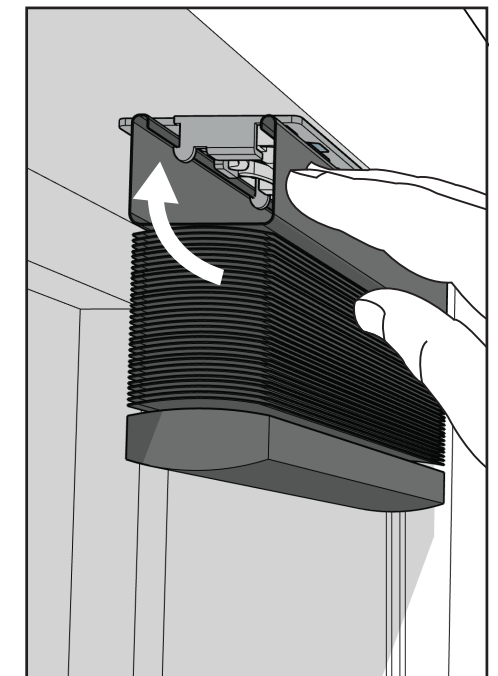
Brackets are to be placed 190mm from each end and as even as possible throughout the rest of the blind making sure the middle brackets are placed between the ladder tapes so they do not interfere with the workings of the blind.

- 2 To install your blind, hold the blind from underneath the bottom rail and hook the front lip of your head rail over the entire brackets. Note the slight angle on the head rail when installing.



- 3 Push the head rail toward the window with a slight upwards motion, to get the rear of the head rail to hook under the rear lip.

This can generally be done in one action but with larger blinds you may need to work from One side to the other.



Note: it is easier to clip in one bracket at a time when installing the blind rather than all of the brackets at one time. Your blind is now installed - and can be lowered.